



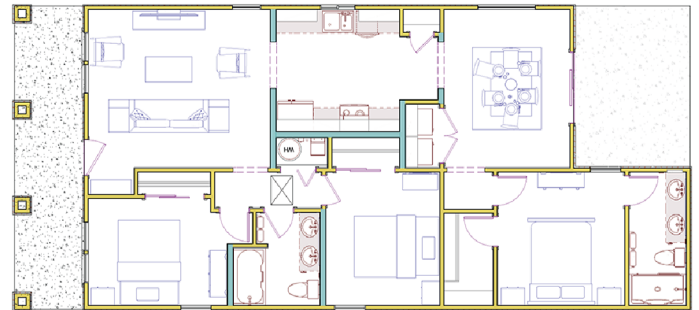
To support neighborhood housing options, the City of Maricopa offers pre-approved housing plans within the city's Heritage District. The program consists of two standard house plans ranging from 800-1,500 square feet with up to three elevations per plan.

The proposed house plans represent the required character elements within the Heritage District per the adopted Design Guidelines. Careful consideration was made to the design, color scheme, and material to ensure enhanced curb appeal and careful consideration of current zoning regulations, typical lot configurations, common construction techniques, and market conditions.

PRE-APPROVED HOUSING PLAN



READY-TO
BUILD HOUSING



PLAN SETS

- Two standard plans.
- Three elevations per plan.
- 800 – 1,500 square feet.
- 3 bedroom, 2 bath
- 2 bedroom, 2 bath

